

OFFERS IN THE REGION OF

£575,000

Moulding Lane

London, SE14 6BT

GARETH
JAMES

PROPERTY SUMMARY

Spanning an impressive 975 sq ft, this beautifully presented three-bedroom, two-bathroom apartment offers contemporary living at its finest, complete with a private balcony and on-site concierge service.

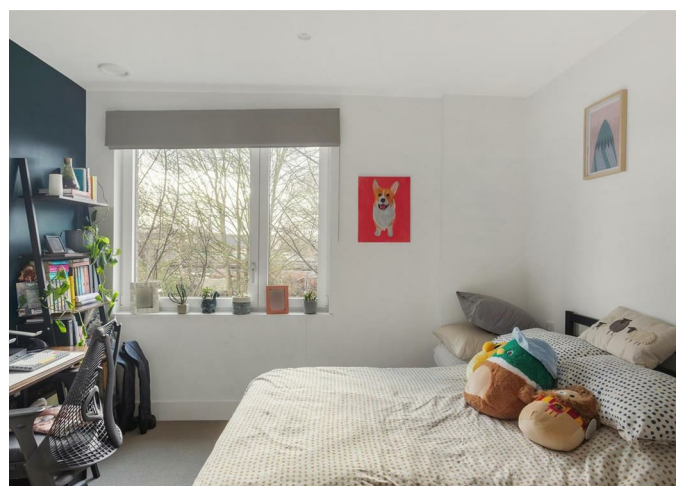
3

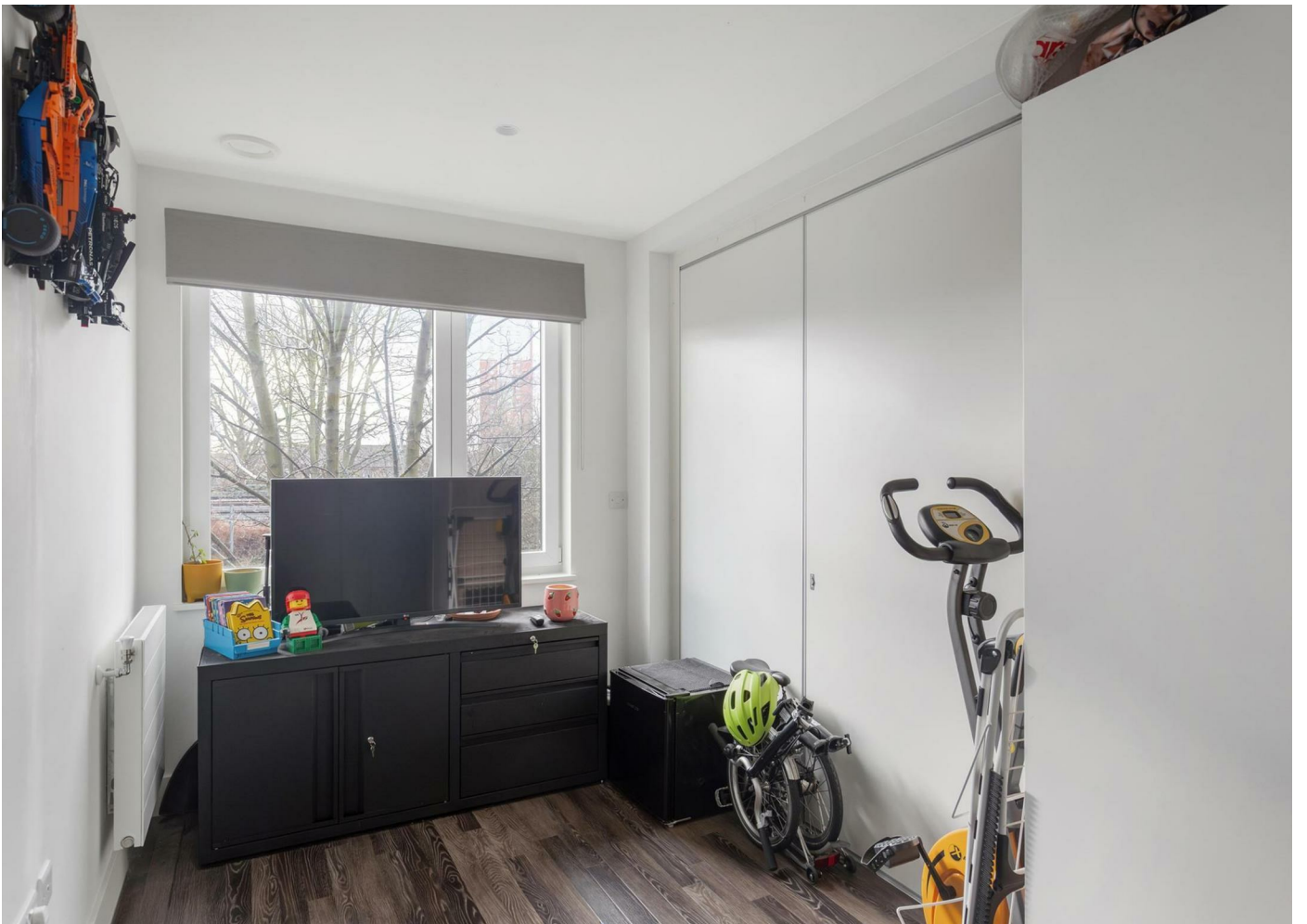


2



1









Moulding Lane, SE14
Approximate Gross Internal Area:
90.57 SQ.M / 975 SQ.FT

GARETH JAMES

Illustration for identification purposes only. Not to scale.
Floor Plan Drawn According To RICS Guidelines.



Energy Efficiency Rating		
	Current	Potential
Very energy efficient - lower running costs		
(92 plus) A		
(81-91) B		
(69-80) C		
(55-68) D		
(39-54) E		
(21-38) F		
(1-20) G		
Not energy efficient - higher running costs		
England & Wales	EU Directive 2002/91/EC	

Agents Note: Whilst every care has been taken to prepare these particulars, they are for guidance purposes only. All measurements are approximate and are for general guidance purposes only and whilst every care has been taken to ensure their accuracy, they should not be relied upon and potential buyers/tenants are advised to recheck the measurements

GARETH JAMES

OFFICE ADDRESS
129 Bellenden Road
London
SE15 4QY

OFFICE DETAILS
02077324330
sales@garethjames.com
<https://www.garethjames.com/>